

# SUMMERTIME SAVINGS

Limited-Time Special Incentives on New Construction Homes



ASHCOMBE  
WELLEN PARK



From **\$277,990**

3 Beds | 2.5 Baths | 1,463-1,464 Sq. Ft.

## COMMUNITY HIGHLIGHTS



Concrete block construction on both floors



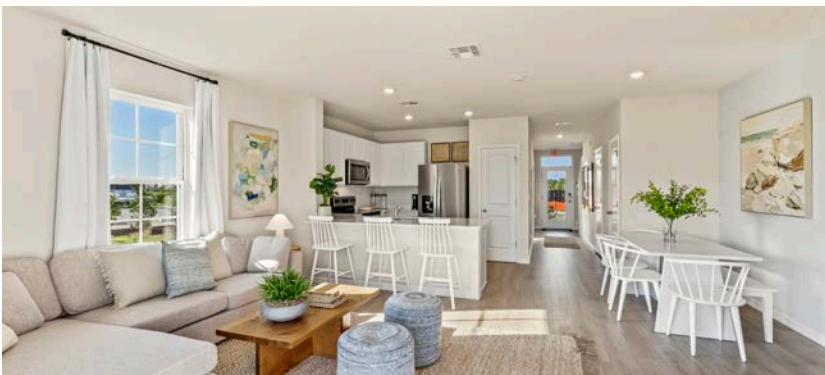
Equipped with range, microwave, refrigerator, dishwasher and laundry machines.



Walking distance to Wellen Park High School



Convenient access to Venice and Port Charlotte



Up To

**\$10,000**  
in Closing Costs<sup>1</sup>

on select inventory homes with the use of DHI Mortgage.



**D·R·HORTON**  
America's Builder

941-205-9603 | manateesarasota@drhorton.com | drhorton.com

D.R. Horton is an equal housing opportunity builder. Home and community information, including pricing, included features, terms, availability and amenities, are subject to change without notice or obligation. Images are representational only and will vary from the homes as built. Financing offered by DHI Mortgage Company, Ltd. (DHIM), Branch NMLS #1015580, 5901 N. Honore Ave., Suite 275, Sarasota, FL 34243. Company NMLS# 14622. DHIM is an affiliate of D.R. Horton. For more information about DHIM and its licensing please visit [www.dhimortgage.com/affiliate](http://www.dhimortgage.com/affiliate). <sup>1</sup>Closing cost offering of up to \$10,000 consists of up to \$10,000 available if the buyer funds and closes with DHIM. Buyer is not required to finance through DHIM or another seller "Preferred Lender" to purchase a home; however, buyer must use DHIM or another seller "preferred lender" to receive the additional up to \$10,000 closing cost incentive. Amount of closing costs can be dependent on loan program restrictions. All offers subject to change without notice. Terms and conditions apply. Some restrictions apply. Closing cost incentives tied to the use of DHIM will vary by community. See sales agent for complete list of all sellers "Preferred Lenders." Provided for informational purposes only. This is not a commitment to lend; not all buyers will qualify. Closing Cost incentive offer is valid for new contracts on select inventory in certain D.R. Horton Sarasota communities that are executed between 06/01/26 and 06/30/26 and close escrow per terms of contract. Offer subject to change without notice, redeemable only at closing and is not redeemable for cash or credit against purchase price. EXP: 06/30/26.